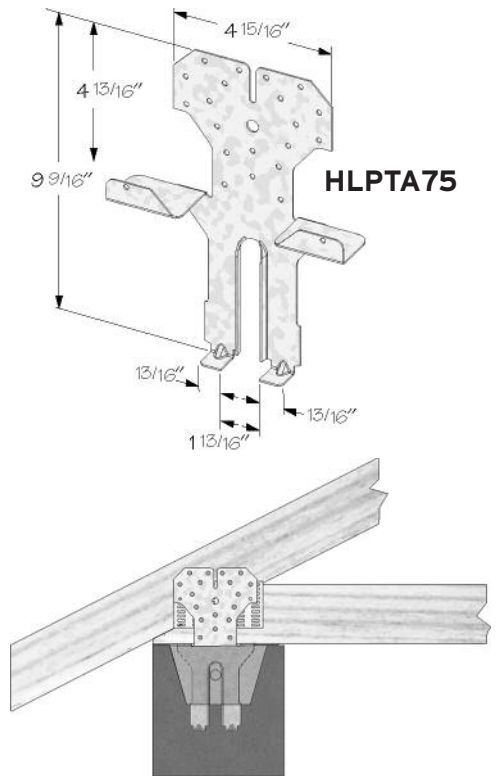


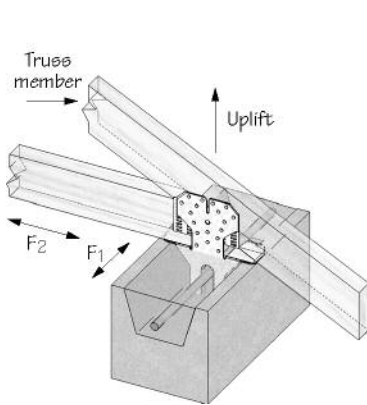
HLPTA EMBEDDED TRUSS ANCHOR

Installation:

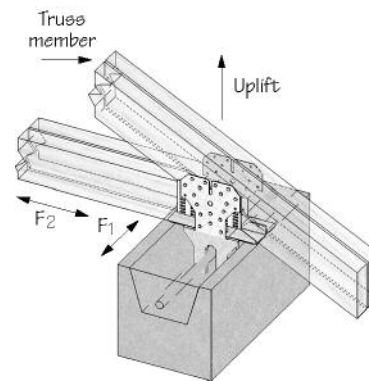
- Use all specified fasteners.
- Embed in concrete tie beam or bond beam grout until the seat is resting on the grout surface.
- Minimum of one #7 rebar or two #5 rebars through the theoretical shear cone is required.
- Grout or concrete compressive strength shall be 2,000 psi at 28 days.
- Minimum spacing between anchors is 10" to achieve full design load capacities on single anchors.
- For (2) #15 rebar installation product may need to be "twisted" into place depending on block face shell thickness.
- For (2) #5 rebar installations in 8" masonry block the maximum recommended face shell thickness is 13³/₄".
- For bond beam block with web ribs, the minimum required clearance between ribs is 3³/₄".



HLPTA75

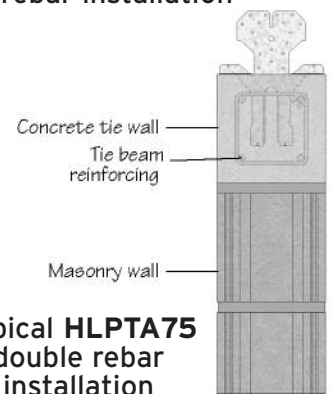


Typical HLPTA75 single anchor installation



Typical HLPTA75 double anchor installation

Typical HLPTA75 single rebar installation



Typical HLPTA75 double rebar installation

USP Stock No.	Ref. No.	Steel Gauge	Installation Type	Fastener Schedule ²		Allowable Loads (Lbs.) ¹						
				Seat Plate	Truss/Rafter	DF-L / SP			S-P-F			
						F1 133%160%	F2 133%160%	Uplift 133%160%	F1 133%160%	F2 133%160%	Uplift 133%160%	
HLPTA75	--	18	Single Anchor	(2) 10d x 1-1/2	(20) 10d x 1-1/2	1860	1715	2125	1860	1160	2105	2125
			Double Anchor	--	(40) 10d x 1-1/2	2040	2100	3500	2040	2100	3500	3500

1) Allowable loads have been increased 33-1/3% or 60% for wind and seismic loads; no further increase shall be permitted.
2) 10d x 1-1/2 nails are 9 gauge (0.148" diameter) by 1-1/2" long.

USP supplies quality products to build Stronger Safer Structures



Customer Service:
Burnsville, MN
Phone: 1-800-328-5934
Fax: 1-507-364-8762

Manufacturing:
Montgomery, MN • Livermore, CA
Largo, FL • Rancho Cucamonga, CA
Thornhill, Ontario

Warehouses:
Houston, TX
Lumberton, NJ

www.USPconnectors.com

A GIBRALTAR INDUSTRIES COMPANY

Information valid until July 1, 2009.

USP917-071

SALES SHEET