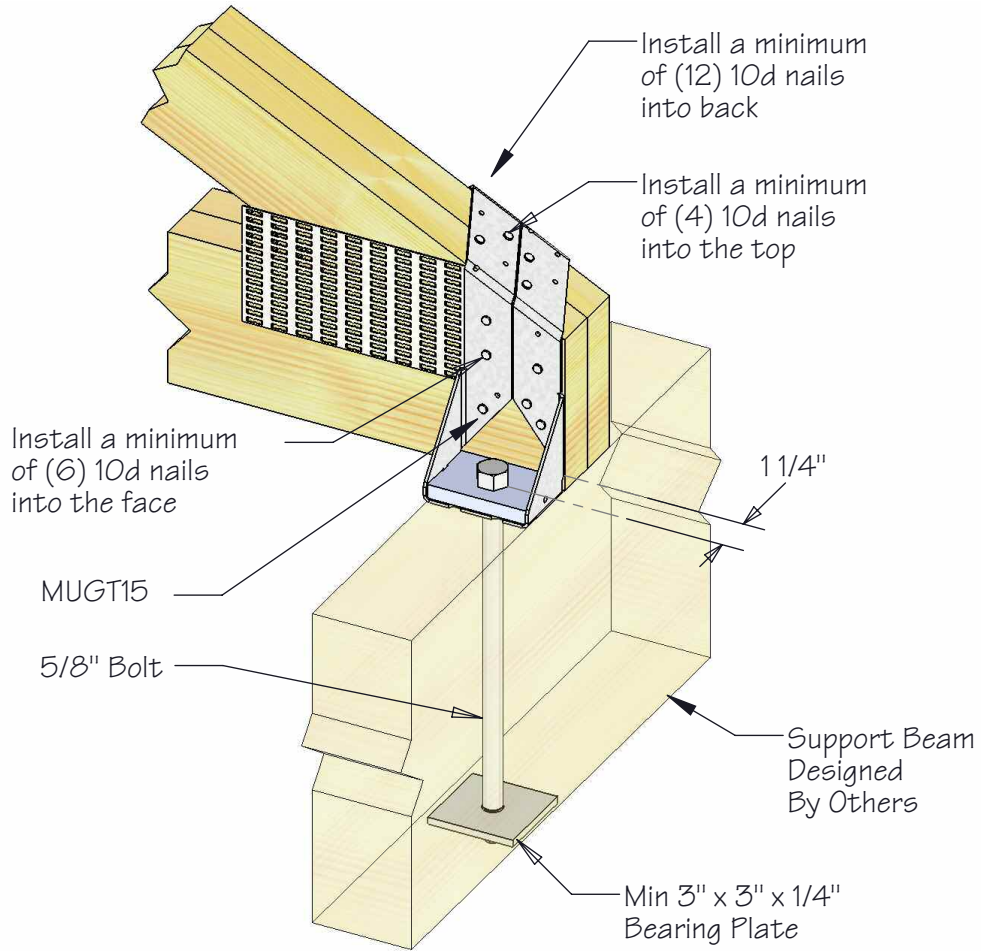


MUGT15 CONNECTION TO SUPPORT BEAM



MUGT15 CONNECTION TO SUPPORT BEAM

MUGT15 TRUSS ANCHOR

| STOCK NO. | STEEL GAUGE | DIMENSIONS (inches) | | | | MOUNTING CONDITION ¹ | FASTENERS ² | | | | | ALLOWABLE LOADS (lbs) | |
|-----------|-------------|---------------------|-------------------|-------------------|--------------------|---------------------------------|------------------------|------|------|--------|-----|--------------------------------|------|
| | | Width | Depth | Unbent Height | Strap Width | | Rafter/Truss | | | Anchor | | Uplift C _o = 1.6 | |
| | | | | | | | Top | Face | Back | Type | Qty | | Type |
| MUGT15 | 12 | 3 ^{11/16} | 2 ^{7/16} | 14 ^{5/8} | 1 ^{21/32} | Face-Max | -- | 28 | -- | 10d | 1 | 5/8 | 4495 |
| | | | | | | Top-Min | 4 | 6 | 12 | 10d | 1 | 5/8 | 4175 |

For SI: 1 inch = 25.4 mm, 1 lbf = 4.45 N, 1 psi = 6.89 kPa

¹Mounting Condition: Face-Max: All rafter/truss nails installed into the wide face of the rafter/truss.

Top-Min: The hanger is applied in a top mount condition with at least six nails installed on the rafter/truss face, four nails on top of the rafter/truss and twelve nails into the back face.

²A 10d nail has a diameter of 0.148 inch and length of 3 inches.

³Uplift loads have been increased 60% for wind or seismic loads. No further increase shall be permitted.



USP supplies quality products to build Stronger Safer Structures

Customer Service:
Burnsville, MN
Phone: 1-800-328-5934/
1-952-898-8772
Fax: 1-952-898-8605

Manufacturing:
Montgomery, MN
Livermore, CA
Largo, FL
Thornhill, Ontario

Warehouses:
Humble, TX
Lumberton, NJ

www.USPconnectors.com