

USP offers a wide variety of light-gauge face mount joist hangers to accommodate application and installation preferences.

**JL series** – 20 gauge, 2x joist hangers.

**JL-IF series** – 18 gauge, 2x joist hangers.

**SUH series** – 16 gauge steel construction for more demanding applications and light truss support.

**Materials:** See chart

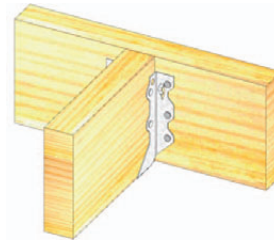
**Finish:** G90 galvanizing

**Options:** See SUH Specialty Options Chart.

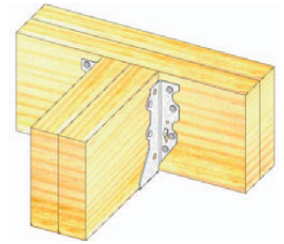
**Codes:** ESR-1781, ESR-1280, L.A. City RR 25749,  
**L.A. City RR 25843**, FL571, FL11664, **FL13285**,  
 Dade County, FL 07.0214.20

**Installation:**

- Use all specified fasteners. See Product Notes, page 11.



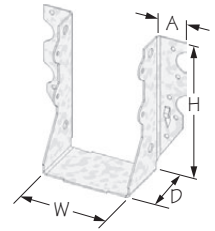
Typical **JL26** installation



Typical **SUH26-2** installation



**JL26**

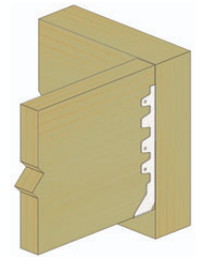


**SUH26-2**

**SUH Specialty Options Chart** – refer to Specialty Options pages 194 to 195 for additional details.

Option <sup>4</sup>	Skewed <sup>1,3</sup>	Sloped Seat <sup>2,3</sup>	Sloped / Skewed <sup>1,2,3</sup>
<b>Range</b>	1° to 67-1/2° when width is 1-3/4" or less. 1° to 50° on all others.	1° to 45°	See Sloped Seat and Skewed
<b>Allowable Loads</b>	100% of table load. 75% of uplift load on skews greater than 15°.	100% of table load	80% of table load. 75% of uplift load on skews greater than 15°.
<b>Ordering</b>	Add SK angle required, and right (R) or left (L), to product number. Ex. SUH210-SK45R	Add SL, slope required, and up (U) or down (D), to product number. Ex. SUH210-SL30D	See Sloped Seat and Skewed. Ex. SUH210-SK45RSL30D

- 1) Skewed hangers with skews greater than 15° may have all joist nailing on outside flange.
- 2) Sloped or sloped / skewed hangers with slopes greater than 15° may have additional joist nails.
- 3) All sloped, skewed, or combinations require bevel cut on joist in all applications and web stiffeners with I-Joists.
- 4) Some SUH option hangers may be manufactured as welded products to achieve listed loads.



Typical **JL-IF** installation

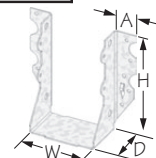


**JL-IF**

© Copyright 2011 USP Structural Connectors®

Joist Size	USP Stock No.	Ref. No.	Steel Gauge	Dimensions				Fastener Schedule <sup>2,3,4,6,7</sup>				Allowable Loads (Lbs.)				Code Ref.	
				W	H	D	A	Header		Joist		DF-L / SP					
								Qty	Nail	Qty	Nail	Floor	Roof		Uplift <sup>1</sup>		
				100%	115%	125%	160%										
2 x 4	JL24	LU24	20	1-9/16	3	1-1/2	15/16	4	10d	2	10d x 1-1/2	455	525	570	245	5, F6, F30, D3, R5	
	JL24IF-TZ	---	18	1-9/16	3-1/8	1-1/2	---	4	10d	2	10d x 1-1/2	465	480	480	305	110	
	JUS24	LUS24	18	1-9/16	3-1/8	1-3/4	1	4	10d	2	10d	655	750	820	510	6, F6, F15, D3, R13	
	JUS24-GC	---	18	1-9/16	3-1/8	1-3/4	1	4	N10C-GC	2	N10C-GC	655	750	820	510	5, F30, R13	
	SUH24	U24	16	1-9/16	3-1/4	2	1-3/16	4	10d	2	10d x 1-1/2	465	535	580	360	2, F20, R12	
	HD26	HU26	14	1-9/16	3-1/2	2	1-1/8	4	16d	2	10d x 1-1/2	565	650	705	290	5, F30, R5	
2 x 6	JL26	LU26	20	1-9/16	4-3/4	1-1/2	15/16	6	10d	4	10d x 1-1/2	685	785	855	485	5, F6, F30, D3, R5	
	JL26IF-TZ	LUC26Z	18	1-9/16	4-1/2	1-1/2	---	6	10d	4	10d x 1-1/2	695	800	870	730	110	
	JUS26	LUS26	18	1-9/16	4-13/16	1-3/4	1	4	10d	4	10d	850	975	1060	1115	6, F6, F15, D3, R13	
	JUS26-GC	---	18	1-9/16	4-13/16	1-3/4	1	4	N10C-GC	4	N10C-GC	850	975	1060	1115	110	
	MUS26	MUS26	18	1-9/16	5-1/16	2	1	6	10d	6	10d	1285	1475	1605	865	110	
	SUH26	U26	16	1-9/16	5-1/8	2	1-3/16	6	10d	4	10d x 1-1/2	695	800	870	725	2, F20, R12	
	HD26	HU26	14	1-9/16	3-1/2	2	1-1/8	4	16d	2	10d x 1-1/2	565	650	705	290	6, F15, F18, D2, R13	
	HD28	HU28	14	1-9/16	5-1/4	2	1-1/8	8	16d	4	10d x 1-1/2	1130	1295	1410	730	5, F30, R5	
	2 x 8	JL26	LU26	20	1-9/16	4-3/4	1-1/2	15/16	6	10d	4	10d x 1-1/2	685	785	855	485	5, F6, F30, D3, R5
		JL26IF-TZ	LUC26Z	18	1-9/16	4-1/2	1-1/2	---	6	10d	4	10d x 1-1/2	695	800	870	730	110
JL28		LU28	20	1-9/16	6-3/8	1-1/2	15/16	10	10d	6	10d x 1-1/2	1140	1295	1295	885	5, F6, F30, D3, R5	
JL28IF-TZ		LUC28Z	18	1-9/16	6-1/8	1-1/2	---	8	10d	4	10d x 1-1/2	930	1065	1160	730	110	
JUS26		LUS26	18	1-9/16	4-13/16	1-3/4	1	4	10d	4	10d	850	975	1060	1115	6, F6, F15, D3, R13	
JUS26-GC		---	18	1-9/16	4-13/16	1-3/4	1	4	N10C-GC	4	N10C-GC	850	975	1060	1115	110	
JUS28		LUS28	18	1-9/16	6-5/8	1-3/4	1	6	10d	4	10d	1075	1235	1345	1115	110	
JUS28-GC		---	18	1-9/16	6-5/8	1-3/4	1	6	N10C-GC	4	N10C-GC	1075	1235	1345	1115	110	
MUS26		MUS26	18	1-9/16	5-1/16	2	1	6	10d	6	10d	1285	1475	1605	865	110	
MUS28		MUS28	18	1-9/16	7-1/16	2	1	8	10d	8	10d	1710	1970	2140	1230	110	
SUH26		U26	16	1-9/16	5-1/8	2	1-3/16	6	10d	4	10d x 1-1/2	695	800	870	725	2, F20, R12	
SUH28		---	16	1-9/16	6-5/8	2	1-3/16	8	10d	6	10d x 1-1/2	930	1065	1160	800	110	
SUH28		---	16	1-9/16	6-5/8	2	1-3/16	8	16d	6	10d x 1-1/2	1105	1270	1380	800	110	
HUS26		HUS26	16	1-5/8	5-7/16	3	2	14	16d	6	16d	2635	3030	3295	1925	6, F15, F18, D2, R13	
HUS28		HUS28	16	1-5/8	7-3/16	3	2	22	16d	8	16d	3970	4345	4345	2570	110	
HD28		HU28	14	1-9/16	5-1/4	2	1-1/8	8	16d	4	10d x 1-1/2	1130	1295	1410	730	5, F30, R5	
HD210	HU210	14	1-9/16	7-3/16	2	1-1/8	12	16d	4	10d x 1-1/2	1690	1945	2115	730	5, F30, R5		
2 x 10	JL28	LU28	20	1-9/16	6-3/8	1-1/2	15/16	10	10d	6	10d x 1-1/2	1140	1295	1295	885	5, F6, F30, D3, R5	
	JL28IF-TZ	LUC28Z	18	1-9/16	6-1/8	1-1/2	---	8	10d	4	10d x 1-1/2	930	1065	1160	730	110	
	JL210	LU210	20	1-9/16	8-1/4	1-1/2	15/16	14	10d	8	10d x 1-1/2	1595	1835	1875	1095	5, F6, F30, D3, R5	
	JL210IF-TZ	LUC210Z	18	1-9/16	8-1/4	1-1/2	---	11	10d	6	10d x 1-1/2	1275	1465	1595	1095	110	
	JL210IF-TZ	LUC210Z	18	1-9/16	8-1/4	1-1/2	---	11	16d	6	10d x 1-1/2	1520	1745	1900	1095	110	
	JUS28	LUS28	18	1-9/16	6-5/8	1-3/4	1	6	10d	4	10d	1075	1235	1345	1115	6, F6, F15, D3, R13	
	JUS28-GC	---	18	1-9/16	6-5/8	1-3/4	1	6	N10C-GC	4	N10C-GC	1075	1235	1345	1115	110	
	JUS210	LUS210	18	1-9/16	7-3/4	1-3/4	1	8	10d	4	10d	1305	1500	1630	1115	110	
	JUS210-GC	---	18	1-9/16	7-3/4	1-3/4	1	8	N10C-GC	4	N10C-GC	1305	1500	1630	1115	110	
	MUS28	MUS28	18	1-9/16	7-1/16	2	1	8	10d	8	10d	1710	1970	2140	1230	110	
	SUH28	---	16	1-9/16	6-5/8	2	1-3/16	8	10d	6	10d x 1-1/2	930	1065	1160	800	2, F20, R12	
	SUH28	---	16	1-9/16	6-5/8	2	1-3/16	8	16d	6	10d x 1-1/2	1105	1270	1380	800	110	
	SUH210	U210	16	1-9/16	8	2	1-3/16	10	10d	6	10d x 1-1/2	1160	1335	1450	1085	110	
	SUH210	U210	16	1-9/16	8	2	1-3/16	10	16d	6	10d x 1-1/2	1380	1585	1725	1085	110	
HUS28	HUS28	16	1-5/8	7-3/16	3	2	22	16d	8	16d	3970	4345	4345	2570	6, F15, F18, D2, R13		
HUS210	HUS210	16	1-5/8	9-3/16	3	2	30	16d	10	16d	5310	5510	5510	3205	5, F30, R5		
HD210	HU210	14	1-9/16	7-3/16	2	1-1/8	12	16d	4	10d x 1-1/2	1690	1945	2115	730	5, F30, R5		

- Uplift loads have been increased 60% for wind or seismic loads; no further increase shall be permitted.
- 10d x 1-1/2 nails are 9 gauge (0.148" diameter) by 1-1/2" long.
- Minimum nail embedment shall be 1-1/2" for 10d and N10C-GC nails; 1-5/8" for 16d and N16C-GC nails.
- 16d sinkers (9 gauge x 3-1/4" long) may be used at 0.84 of the table load where 16d commons are specified.
- For JUS and HUS hangers: Nails must be driven at a 30° to 45° angle through the joist or truss into the header to achieve the table loads.
- WS15 Wood Screws are 1-1/4" x 1-1/2" long and are included with HDQ hangers.
- WS3 Wood Screws are 1-1/4" x 3" long and are included with HDQ hangers.



# FACE MOUNT HANGER CHARTS CONTINUED



© Copyright 2011 USP Structural Connectors®

Joist Size	USP Stock No.	Ref. No.	Steel Gauge	Dimensions				Fastener Schedule <sup>2,3,4,6,7</sup>				Allowable Loads (Lbs.)				Code Ref.
				W	H	D	A	Header		Joist		DF-L / SP				
								Qty	Nail	Qty	Nail	Floor	Roof		Uplift <sup>1</sup>	
100%	115%	125%	160%													
2 x 12	JL210	LU210	20	1-9/16	8-1/4	1-1/2	15/16	14	10d	8	10d x 1-1/2	1595	1835	1875	1095	5, F6, F30, D3, R5
			20	1-9/16	8-1/4	1-1/2	15/16	14	16d	8	10d x 1-1/2	1905	1965	1965	1095	
	JL210IF-TZ	LUC210Z	18	1-9/16	8-1/4	1-1/2	---	11	10d	6	10d x 1-1/2	1275	1465	1595	1095	110
			18	1-9/16	8-1/4	1-1/2	---	11	16d	6	10d x 1-1/2	1520	1745	1900	1095	
	JUS210	LUS210	18	1-9/16	7-3/4	1-3/4	1	8	10d	4	10d	1305	1500	1630	1115	6, F6, F15, D3, R13
	JUS210-GC	--	18	1-9/16	7-3/4	1-3/4	1	8	N10C-GC	4	N10C-GC	1305	1500	1630	1115	
	SUH210	U210	16	1-9/16	8	2	1-3/16	10	10d	6	10d x 1-1/2	1160	1335	1450	1085	2, F20, R12
			16	1-9/16	8	2	1-3/16	10	16d	6	10d x 1-1/2	1380	1585	1725	1085	
	HUS210	HUS210	16	1-5/8	9-3/16	3	2	30	16d	10	16d	5310	5510	5510	3205	6, F15, F18, D2, R13
	HD210	HU210	14	1-9/16	7-3/16	2	1-1/8	12	16d	4	10d x 1-1/2	1690	1945	2115	730	5, F30, R5
	HD212	HU212	14	1-9/16	9-1/4	2	1-1/8	16	16d	6	10d x 1-1/2	2255	2595	2730	1065	
2 x 14	SUH214	U214	16	1-9/16	10	2	1-1/8	12	10d	8	10d x 1-1/2	1390	1600	1740	1330	2, F20, R12
			16	1-9/16	10	2	1-1/8	12	16d	8	10d x 1-1/2	1655	1905	2070	1330	
	HD212	HU212	14	1-9/16	9-1/4	2	1-1/8	16	16d	6	10d x 1-1/2	2255	2595	2730	1065	5, F30, R5
	HD214	HU214	14	1-9/16	11-1/2	2	1-1/8	20	16d	6	10d x 1-1/2	2560	2660	2730	1065	
2 x 16	SUH214	U214	16	1-9/16	10	2	1-1/8	12	10d	8	10d x 1-1/2	1390	1600	1740	1330	2, F20, R12
			16	1-9/16	10	2	1-1/8	12	16d	8	10d x 1-1/2	1655	1905	2070	1330	
	HD212	HU212	14	1-9/16	9-1/4	2	1-1/8	16	16d	6	10d x 1-1/2	2255	2595	2730	1065	5, F30, R5
	HD214	HU214	14	1-9/16	11-1/2	2	1-1/8	20	16d	6	10d x 1-1/2	2560	2660	2730	1065	
(2) 2 x 4	JUS24-2	LUS24-2	18	3-1/8	3-7/16	2	1	4	16d	2	16d	780	900	965	325	6, F5, R13
			16	3-1/8	3-1/8	2	1-1/8	6	10d	2	10d	695	800	870	370	2, F20, R12
	SUH24-2	U24-2	16	3-1/8	3-1/8	2	1-1/8	6	16d	2	10d	830	950	1035	370	
			14	3-1/8	3-1/2	2-1/2	1-1/8	4	16d	2	10d	565	650	705	320	5, F30, R5
	HUS24-2	--	14	3-1/8	3-7/16	2	1	4	16d	2	16d	800	920	1000	495	6, F15, R13
(2) 2 x 6	JUS26-2	LUS26-2	18	3-1/8	5-1/4	2	1	4	16d	4	16d	1015	1170	1220	1355	6, F5, F15, D7, R13
	JUS26-2GC	--	18	3-1/8	5-1/4	2	1	4	N16C-GC	4	N16C-GC	1015	1170	1220	1355	
	SUH26-2	U26-2	16	3-1/8	5-1/16	2	1-1/8	8	10d	4	10d	930	1065	1160	740	2, F20, R12
			16	3-1/8	5-1/16	2	1-1/8	8	16d	4	10d	1105	1270	1380	740	
	HD24-2	HU24-2	14	3-1/8	3-1/2	2-1/2	1-1/8	4	16d	2	10d	565	650	705	320	5, F30, R5
			14	3-1/8	3-7/16	2	1	4	16d	2	16d	800	920	1000	495	6, F15, R13
	HUS26-2	HUS26-2	14	3-1/8	5-1/4	2	1	4	16d	4	16d	1030	1185	1290	1115	6, F18, F15, D2, R13
	HD26-2	HU26-2	14	3-1/8	5-1/8	2-1/2	1-1/8	12	16d	6	10d	1690	1945	2095	1140	5, F30, R5
(2) 2 x 8	JUS26-2	LUS26-2	18	3-1/8	5-1/4	2	1	4	16d	4	16d	1015	1170	1220	1355	6, F5, F15, D7, R13
	JUS26-2GC	---	18	3-1/8	5-1/4	2	1	4	N16C-GC	4	N16C-GC	1015	1170	1220	1355	
	JUS28-2	LUS28-2	18	3-1/8	7-1/8	2	1	6	16d	4	16d	1290	1485	1615	1355	
	SUH26-2	U26-2	16	3-1/8	5-1/16	2	1-1/8	8	10d	4	10d	930	1065	1160	740	2, F20, R12
			16	3-1/8	5-1/16	2	1-1/8	8	16d	4	10d	1105	1270	1380	740	
			16	3-1/8	6-1/4	2	1-1/8	10	10d	4	10d	1160	1335	1450	740	
			16	3-1/8	6-1/4	2	1-1/8	10	16d	4	10d	1380	1585	1725	740	
	HUS26-2	HUS26-2	14	3-1/8	5-1/4	2	1	4	16d	4	16d	1030	1185	1290	1115	6, F18, F15, D2, R13
	HUS28-2	HUS28-2	14	3-1/8	7-1/8	2	1	6	16d	6	16d	1550	1780	1935	1810	
	HD26-2	HU26-2	14	3-1/8	5-1/8	2-1/2	1-1/8	12	16d	6	10d	1690	1945	2095	1140	5, F30, R5
	HD28-2	HU28-2	14	3-1/8	7-1/8	2-1/2	1-1/8	14	16d	6	10d	1975	2270	2470	1140	
(2) 2 x 10	JUS28-2	LUS28-2	18	3-1/8	7-1/8	2	1	6	16d	4	16d	1290	1485	1615	1355	6, F5, F15, D7, R13
	JUS210-2	LUS210-2	18	3-1/8	9-1/8	2	1	8	16d	6	16d	1800	2070	2250	1980	
	JUS210-2GC	--	18	3-1/8	9-1/8	2	1	8	N16C-GC	6	N16C-GC	1800	2070	2250	1980	
	SUH28-2	---	16	3-1/8	6-1/4	2	1-1/8	10	10d	4	10d	1160	1335	1450	740	2, F20, R12
			16	3-1/8	6-1/4	2	1-1/8	10	16d	4	10d	1380	1585	1725	740	
	SUH210-2	U210-2	16	3-1/8	8-9/16	2	1-1/8	14	10d	6	10d	1625	1870	2030	1115	
			16	3-1/8	8-9/16	2	1-1/8	14	16d	6	10d	1930	2220	2415	1115	
	HUS28-2	HUS28-2	14	3-1/8	7-1/8	2	1	6	16d	6	16d	1550	1780	1935	1810	6, F18, F15, D2, R13
	HD28-2	HU28-2	14	3-1/8	7-1/8	2-1/2	1-1/8	14	16d	6	10d	1975	2270	2470	1140	5, F30, R5
	HUS210-2	HUS210-2	14	3-1/8	9-1/8	2	1	8	16d	8	16d	2065	2375	2580	2210	6, F18, F15, D2, R13
	HD210-2	HU210-2	14	3-1/8	9	2-1/2	1-1/8	18	16d	10	10d	2540	2920	3175	1905	5, F30, R5
	HDQ210-2IF	HUCQ210-2-SDS	14	3-1/4	9	3	1-1/2	12	WS3	6	WS3	5015	5590	5590	2975	110

Hangers

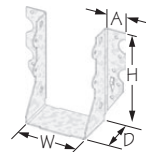
continued on next page

1-800-328-5934 • www.USPconnectors.com

USP2173-111

Joist Size	USP Stock No.	Ref. No.	Steel Gauge	Dimensions				Fastener Schedule <sup>4,5,6,7</sup>				Allowable Loads (Lbs.)				Code Ref.
				W	H	D	A	Header		Joist		DF-L / SP				
								Qty	Nail	Qty	Nail	Floor	Roof		Uplift <sup>1</sup>	
100%	115%	125%	160%													
(2) 2 x 12	JUS210-2	LUS210-2	18	3-1/8	9-1/8	2	1	8	16d	6	16d	1800	2070	2250	1980	6, F5, F15, D7, R13
	JUS210-2GC	--	18	3-1/8	9-1/8	2	1	8	N16C-GC	6	N16C-GC	1800	2070	2250	1980	
	SUH210-2	U210-2	16	3-1/8	8-9/16	2	1-1/8	14	10d	6	10d	1625	1870	2030	1115	2, F20, R12
			16	3-1/8	8-9/16	2	1-1/8	14	16d	6	10d	1930	2220	2415	1115	
	HUS210-2	HUS210-2	14	3-1/8	9-1/8	2	1	8	16d	8	16d	2065	2375	2580	2210	6, F18, F15, D2, R13
	HD210-2	HU210-2	14	3-1/8	9	2-1/2	1-1/8	18	16d	10	10d	2540	2920	3175	1905	5, F30, R5
	HDQ210-2IF	HUCQ210-2-SDS	14	3-1/4	9	3	1-1/2	12	WS3	6	WS3	5015	5590	5590	2975	110
	HUS212-2	HUS212-2	14	3-1/8	11-1/8	2	1	10	16d	10	16d	2580	2965	3225	3060	6, F18, F15, D2, R13
	HD212-2	HU212-2	14	3-1/8	11	2-1/2	1-1/8	22	16d	10	10d	3100	3565	3880	1905	5, F30, R5
(2) 2 x 14	JUS210-2	LUS210-2	18	3-1/8	9-1/8	2	1	8	16d	6	16d	1800	2070	2250	1980	6, F5, F15, D7, R13
	JUS214-2	--	18	3-1/8	13-1/8	2	1	12	16d	6	16d	2345	2700	2935	1980	6, F15
	SUH210-2	U210-2	16	3-1/8	8-9/16	2	1-1/8	14	10d	6	10d	1625	1870	2030	1115	2, F20, R12
			16	3-1/8	8-9/16	2	1-1/8	14	16d	6	10d	1930	2220	2415	1115	
	HD210-2	HU210-2	14	3-1/8	9	2-1/2	1-1/8	18	16d	10	10d	2540	2920	3175	1905	5, F30, R5
	HDQ210-2IF	HUCQ210-2-SDS	14	3-1/4	9	3	1-1/2	12	WS3	6	WS3	5015	5590	5590	2975	110
		HUS212-2	HUS212-2	14	3-1/8	11-1/8	2	1	10	16d	10	16d	2580	2965	3225	3060
	HD212-2	HU212-2	14	3-1/8	11	2-1/2	1-1/8	22	16d	10	10d	3100	3565	3880	1905	5, F30, R5
	HD214-2	HU214-2	14	3-1/8	13	2-1/2	1-1/8	24	16d	10	10d	3385	3890	4230	1905	
(2) 2 x 16	JUS214-2	--	18	3-1/8	13-1/8	2	1	12	16d	6	16d	2345	2700	2935	1980	6, F15, R13
	HD212-2	HU212-2	14	3-1/8	11	2-1/2	1-1/8	22	16d	10	10d	3100	3565	3880	1905	
	HD214-2	HU214-2	14	3-1/8	13	2-1/2	1-1/8	24	16d	10	10d	3385	3890	4230	1905	5, F30, R5
	HD216-2	HU216-2	14	3-1/8	15	2-1/2	1-1/8	26	16d	12	10d	3665	4215	4570	2285	
3 x 4	SUH34	U34	16	2-9/16	3-3/8	2	1-1/8	6	10d	2	10d x 1-1/2	695	800	850	360	2, F20, R12
			16	2-9/16	3-3/8	2	1-1/8	6	16d	2	10d x 1-1/2	830	850	850	360	
	HD34	HU34	14	2-9/16	3	2	1-1/8	4	16d	2	10d x 1-1/2	565	650	705	290	5, F30, R5
3 x 6	JUS36	LUS36	18	2-9/16	5-5/16	2	1	4	16d	4	16d	1015	1170	1220	1355	6, F15, R13
	SUH34	U34	16	2-9/16	3-3/8	2	1-1/8	6	10d	2	10d x 1-1/2	695	800	850	360	
			16	2-9/16	3-3/8	2	1-1/8	6	16d	2	10d x 1-1/2	830	850	850	360	2, F20, R12
	SUH36	U36	16	2-9/16	5-5/16	2	1-1/8	8	10d	4	10d x 1-1/2	930	1065	1160	725	
			16	2-9/16	5-5/16	2	1-1/8	8	16d	4	10d x 1-1/2	1105	1270	1380	725	
	HD36	HU36	14	2-9/16	4-3/4	2	1-1/8	8	16d	4	10d x 1-1/2	1130	1295	1410	730	5, F30, R5
3 x 8	JUS38	---	18	2-9/16	6-3/4	2	1	6	16d	4	16d	1290	1485	1615	1355	6, F15, R13
	SUH36	U36	16	2-9/16	5-5/16	2	1-1/8	8	10d	4	10d x 1-1/2	930	1065	1160	725	2, F20, R12
			16	2-9/16	5-5/16	2	1-1/8	8	16d	4	10d x 1-1/2	1105	1270	1380	725	
	HD36	HU36	14	2-9/16	4-3/4	2	1-1/8	8	16d	4	10d x 1-1/2	1130	1295	1410	730	5, F30, R5
	HD38	HU38	14	2-9/16	6-3/4	2	1-1/8	12	16d	4	10d x 1-1/2	1690	1945	2115	730	
3 x 10	JUS310	LUS310	18	2-9/16	9-1/8	2	1	8	16d	6	16d	1800	2070	2250	1980	6, F15, R13
	SUH310	U310	16	2-9/16	8-7/8	2	1-1/8	14	10d	6	10d x 1-1/2	1625	1870	2030	1085	2, F20, R12
			16	2-9/16	8-7/8	2	1-1/8	14	16d	6	10d x 1-1/2	1930	2220	2415	1085	
	HD38	HU38	14	2-9/16	6-3/4	2	1-1/8	12	16d	4	10d x 1-1/2	1690	1945	2115	730	
	HD310	HU310	14	2-9/16	7-7/16	2-1/2	1-1/8	14	16d	6	10d x 1-1/2	1975	2270	2470	1065	5, F30, R5
	HDQ310IF	HUCQ310-SDS	14	2-9/16	9	3	1-3/16	8	WS3	4	WS15	3340	3380	3380	1470	110
3 x 12	SUH310	U310	16	2-9/16	8-7/8	2	1-1/8	14	10d	6	10d x 1-1/2	1625	1870	2030	1085	2, F20, R12
			16	2-9/16	8-7/8	2	1-1/8	14	16d	6	10d x 1-1/2	1930	2220	2415	1085	
	HD38	HU38	14	2-9/16	6-3/4	2	1-1/8	12	16d	4	10d x 1-1/2	1690	1945	2115	730	5, F30, R5
	HD310	HU310	14	2-9/16	7-7/16	2-1/2	1-1/8	14	16d	6	10d x 1-1/2	1975	2270	2470	1065	
	HDQ310IF	HUCQ310-SDS	14	2-9/16	9	3	1-3/16	8	WS3	4	WS15	3340	3380	3380	1470	110
	HD312	HU312	14	2-9/16	9-5/16	2-1/2	1-1/8	16	16d	10	10d x 1-1/2	2255	2595	2820	1065	5, F30, R5
3 x 14	SUH314	U314	16	2-9/16	10-9/16	2	1-1/8	16	10d	6	10d x 1-1/2	1855	2135	2320	1085	2, F20, R12
			16	2-9/16	10-9/16	2	1-1/8	16	16d	6	10d x 1-1/2	2210	2505	2505	1085	
	HD310	HU310	14	2-9/16	7-7/16	2-1/2	1-1/8	14	16d	6	10d x 1-1/2	1975	2270	2470	1065	5, F30, R5
	HDQ310IF	HUCQ310-SDS	14	2-9/16	9	3	1-3/16	8	WS3	4	WS15	3340	3380	3380	1470	110
	HD312	HU312	14	2-9/16	9-5/16	2-1/2	1-1/8	16	16d	10	10d x 1-1/2	2255	2595	2820	1065	5, F30, R5
	HD314	HU314	14	2-9/16	11-5/16	2-1/2	1-1/8	20	16d	10	10d x 1-1/2	2820	3245	3525	1065	

- Uplift loads have been increased 60% for wind or seismic loads; no further increase shall be permitted.
- 10d x 1-1/2 nails are 9 gauge (0.148" diameter) by 1-1/2" long.
- Minimum nail embedment shall be 1-1/2" for 10d nails; 1-5/8" for 16d and N16C-GC nails.
- 16d sinkers (9 gauge x 3-1/4" long) may be used at 0.84 of the table load where 16d commons are specified.
- For JUS, HUS, and MUS hangers: Nails must be driven at a 30° to 45° angle through the joist or truss into the header to achieve the table loads.
- WS15 Wood Screws are 1-1/4" x 1-1/2" long and are included with HDQ hangers.
- WS3 Wood Screws are 1-1/4" x 3" long and are included with HDQ hangers.



continued on next page

# FACE MOUNT HANGER CHARTS CONTINUED



©Copyright 2011 USP Structural Connectors®

Joist Size	USP Stock No.	Ref. No.	Steel Gauge	Dimensions				Fastener Schedule <sup>2,3,4,6,7</sup>				Allowable Loads (Lbs.)				Code Ref.	
				W	H	D	A	Header		Joist		DF-L / SP					
								Qty	Nail	Qty	Nail	Floor		Roof			Uplift <sup>1</sup>
				100%	115%	125%	160%										
3 x 16	SUH314	U314	16	2-9/16	10-9/16	2	1-1/8	16	10d	6	10d x 1-1/2	1855	2135	2320	1085	2, F20, R12	
	HD312	HU312	14	2-9/16	10-9/16	2	1-1/8	16	16d	6	10d x 1-1/2	2210	2505	2505	1085		
	HD314	HU314	14	2-9/16	9-5/16	2-1/2	1-1/8	16	16d	10	10d x 1-1/2	2255	2595	2820	1065		
	HD316	HU316	14	2-9/16	11-5/16	2-1/2	1-1/8	20	16d	10	10d x 1-1/2	2820	3245	3525	1065		
(2) 3 x 8	HD38-2	HU38-2	14	5-1/8	6-1/8	2-1/2	1-1/8	14	16d	6	10d	1975	2270	2470	1140	5, F30, R5	
(2) 3 x 10	HD38-2	HU38-2	14	5-1/8	6-1/8	2-1/2	1-1/8	14	16d	6	10d	1975	2270	2470	1140		
	HD310-2	HU310-2	14	5-1/8	8	2-1/2	1-1/8	18	16d	10	10d	2540	2920	3175	1905		
(2) 3 x 12	HD310-2	HU310-2	14	5-1/8	8	2-1/2	1-1/8	18	16d	10	10d	2540	2920	3175	1905		
(2) 3 x 14	HD310-2	HU310-2	14	5-1/8	8	2-1/2	1-1/8	18	16d	10	10d	2540	2920	3175	1905		
(3) 2 x 6	JUS26-3	LUS26-3	18	4-5/8	4-1/2	2	1	4	16d	4	16d	1015	1170	1220	1355	6, F5, F15, D7, R13	
	SUH26-3	U26-3	16	4-5/8	5-1/4	2	1	8	10d	2	10d	930	1065	1160	370		2, F20, R12
	HD26-3	HU26-3	14	4-5/8	5-1/4	2	1	8	16d	2	10d	1105	1270	1380	370		
(3) 2 x 8	JUS26-3	LUS26-3	18	4-5/8	4-1/2	2	1	4	16d	4	16d	1015	1170	1220	1355	6, F5, F15, D7, R13	
	JUS28-3	LUS28-3	18	4-5/8	6-3/8	2	1	6	16d	4	16d	1290	1485	1615	1355		
	SUH26-3	U26-3	16	4-5/8	5-1/4	2	1	8	10d	2	10d	930	1065	1160	370		2, F20, R12
	HD26-3	HU26-3	14	4-5/8	5-1/4	2	1	8	16d	2	10d	1105	1270	1380	370		
	HD28-3	---	14	4-5/8	6-3/8	2-1/2	1-1/8	12	16d	6	10d	1690	1945	2095	1140		5, F30, R5
	HD28-3	---	14	4-5/8	6-3/8	2-1/2	1-1/8	12	16d	6	10d	1690	1945	2115	1140		
(3) 2 x 10	JUS28-3	LUS28-3	18	4-5/8	6-3/8	2	1	6	16d	4	16d	1290	1485	1615	1355	6, F5, F15, D7, R13	
	JUS210-3	LUS210-3	18	4-5/8	8-3/8	2	1	8	16d	6	16d	1800	2070	2250	1980		
	SUH210-3	U210-3	16	4-5/8	8-3/8	2	1	14	10d	6	10d	1625	1870	2030	1115		2, F20, R12
	HD210-3	---	14	4-5/8	8-3/8	2	1	14	16d	6	10d	1930	2220	2415	1115		
	HD28-3	---	14	4-5/8	6-3/8	2-1/2	1-1/8	12	16d	6	10d	1690	1945	2115	1140		5, F30, R5
	HD210-3	HU210-3	14	4-5/8	8-1/4	2-1/2	1-1/8	18	16d	10	10d	2540	2920	3175	1905		
HDQ210-3IF	HUCQ210-3-SDS	14	4-5/8	9	3	1-1/2	12	WS3	6	WS3	5015	5590	5590	2975	110		
(3) 2 x 12	JUS210-3	LUS210-3	18	4-5/8	8-3/8	2	1	8	16d	6	16d	1800	2070	2250	1980	6, F5, F15, D7, R13	
	SUH210-3	U210-3	16	4-5/8	8-3/8	2	1	14	10d	6	10d	1625	1870	2030	1115		2, F20, R12
	HD210-3	HU210-3	14	4-5/8	8-3/8	2	1	14	16d	6	10d	1930	2220	2415	1115		
	HDQ210-3IF	HUCQ210-3-SDS	14	4-5/8	8-1/4	2-1/2	1-1/8	18	16d	10	10d	2540	2920	3175	1905		5, F30, R5
	HD212-3	HU212-3	14	4-5/8	9	3	1-1/2	12	WS3	6	WS3	5015	5590	5590	2975		
(3) 2 x 14	JUS210-3	LUS210-3	18	4-5/8	8-3/8	2	1	8	16d	6	16d	1800	2070	2250	1980	6, F5, F15, D7, R13	
	SUH210-3	U210-3	16	4-5/8	8-3/8	2	1	14	10d	6	10d	1625	1870	2030	1115		2, F20, R12
	HD210-3	HU210-3	14	4-5/8	8-3/8	2	1	14	16d	6	10d	1930	2220	2415	1115		
	HDQ210-3IF	HUCQ210-3-SDS	14	4-5/8	8-1/4	2-1/2	1-1/8	18	16d	10	10d	2540	2920	3175	1905		5, F30, R5
	HD212-3	HU212-3	14	4-5/8	9	3	1-1/2	12	WS3	6	WS3	5015	5590	5590	2975		
	HD214-3	HU214-3	14	4-5/8	10-1/4	2-1/2	1-1/8	22	16d	10	10d	3100	3565	3880	1905		5, F30, R5
	HD214-3	HU214-3	14	4-5/8	12-1/4	2-1/2	1-1/8	24	16d	10	10d	3385	3890	4230	1905		
	HD216-3	HU216-3	14	4-5/8	14-1/4	2-1/2	1-1/8	26	16d	12	10d	3665	4215	4570	2285		
HD212-3	HU212-3	14	4-5/8	10-1/4	2-1/2	1-1/8	22	16d	10	10d	3100	3565	3880	1905			
(4) 2 x 10	HD210-4	HU210-4	14	6-1/8	9	3-1/4	2	24	16d	6	10d	3385	3890	4230	1140	5, R5	
(4) 2 x 12	HD210-4	HU210-4	14	6-1/8	9	3-1/4	2	24	16d	6	10d	3385	3890	4230	1140		
(4) 2 x 14	HD210-4	HU210-4	14	6-1/8	9	3-1/4	2	24	16d	6	10d	3385	3890	4230	1140		
4 x 4	JUS44	LUS44	18	3-5/8	3-1/4	2	1	4	16d	2	16d	780	900	965	325	6, F5, R13	
	SUH44	U44	16	3-9/16	2-7/8	2	1-1/8	6	10d	2	10d	695	800	870	370		2, F20, R12
	HD44	HU44	14	3-9/16	2-7/8	2	1-1/8	6	16d	2	10d	830	950	1035	370		
	HD44	HU44	14	3-9/16	3-5/16	2-1/2	1-1/8	4	16d	2	10d	565	650	705	320		
4 x 6	JUS46	LUS46	18	3-5/8	5	2	1	4	16d	4	16d	1015	1170	1220	1355	6, F5, F15, D7, R13	
	SUH44	U44	16	3-9/16	2-7/8	2	1-1/8	6	10d	2	10d	695	800	870	370		2, F20, R12
	SUH46	U46	16	3-9/16	2-7/8	2	1-1/8	6	16d	2	10d	830	950	1035	370		
	SUH46	U46	16	3-9/16	4-13/16	2	1-1/8	8	10d	4	10d	930	1065	1160	740		
	SUH46	U46	16	3-9/16	4-13/16	2	1-1/8	8	16d	4	10d	1105	1270	1380	740		
	HUS46	HUS46	14	3-5/8	5	2	1	4	16d	4	16d	1030	1185	1290	1115		6, F18, F15, D2, R13
HD46	HU46	14	3-9/16	4-15/16	2-1/2	1-1/8	12	16d	6	10d	1690	1945	2095	1140			

Hangers

continued on next page

Joist Size	USP Stock No.	Ref. No.	Steel Gauge	Dimensions				Fastener Schedule <sup>2,3,4,5,6</sup>				Allowable Loads (Lbs.)				Code Ref.
				W	H	D	A	Header		Joist		DF-L / SP				
								Qty	Nail	Qty	Nail	Floor 100%	Roof		Uplift <sup>1</sup> 160%	
				115%	125%											
4 x 8	JUS46	LUS46	18	3-5/8	5	2	1	4	16d	4	16d	1015	1170	1220	1355	6, F5,
	JUS48	LUS48	18	3-5/8	6-7/8	2	1	6	16d	4	16d	1290	1485	1615	1355	F15, D7, R13
	SUH46	U46	16	3-9/16	4-13/16	2	1-1/8	8	10d	4	10d	930	1065	1160	740	2, F20, R12
			16	3-9/16	4-13/16	2	1-1/8	8	16d	4	10d	1105	1270	1380	740	
	HUS46	HUS46	14	3-5/8	5	2	1	4	16d	4	16d	1030	1185	1290	1115	6, F18,
	HUS48	HUS48	14	3-5/8	7	2	1	6	16d	6	16d	1550	1780	1935	1810	F15, D2, R13
	HD46	HU46	14	3-9/16	4-15/16	2-1/2	1-1/8	12	16d	6	10d	1690	1945	2095	1140	5, F30, R5
HD48	HU48	14	3-9/16	6-7/8	2-1/2	1-1/8	14	16d	6	10d	1975	2270	2470	1140		
4 x 10	JUS48	LUS48	18	3-5/8	6-7/8	2	1	6	16d	4	16d	1290	1485	1615	1355	6, F5,
	JUS410	LUS410	18	3-5/8	8-7/8	2	1	8	16d	6	16d	1800	2070	2250	1980	F15, D7, R13
	SUH410	U410	16	3-9/16	8-3/8	2	1-1/8	14	10d	6	10d	1625	1870	2030	1115	2, F20, R12
			16	3-9/16	8-3/8	2	1-1/8	14	16d	6	10d	1930	2220	2415	1115	
	HUS48	HUS48	14	3-5/8	7	2	1	6	16d	6	16d	1550	1780	1935	1810	6, F18, F15, D2, R13
	HD48	HU48	14	3-9/16	6-7/8	2-1/2	1-1/8	14	16d	6	10d	1975	2270	2470	1140	5, F30, R5
	HUS410	HUS410	14	3-5/8	8-7/8	2	1	8	16d	8	16d	2065	2375	2580	2210	6, F18, F15, D2, R13
	HD410	HU410	14	3-9/16	8-13/16	2-1/2	1-1/8	18	16d	10	10d	2540	2920	3175	1905	5, F30, R5
	HDQ410IF	HUCQ410-SDS	14	3-9/16	9	3	1-1/2	12	WS3	6	WS3	5015	5590	5590	2975	110
4 x 12	JUS410	LUS410	18	3-5/8	8-7/8	2	1	8	16d	6	16d	1800	2070	2250	1980	6, F5, F15, D7, R13
	SUH410	U410	16	3-9/16	8-3/8	2	1-1/8	14	10d	6	10d	1625	1870	2030	1115	2, F20, R12
			16	3-9/16	8-3/8	2	1-1/8	14	16d	6	10d	1930	2220	2415	1115	F15, D2, R13
	HD48	HU48	14	3-9/16	6-7/8	2-1/2	1-1/8	14	16d	6	10d	1975	2270	2470	1140	5, F30, R5
	HUS410	HUS410	14	3-5/8	8-7/8	2	1	8	16d	8	16d	2065	2375	2580	2210	6, F18, F15, D2, R13
	HD410	HU410	14	3-9/16	8-13/16	2-1/2	1-1/8	18	16d	10	10d	2540	2920	3175	1905	5, F30, R5
	HDQ410IF	HUCQ410-SDS	14	3-9/16	9	3	1-1/2	12	WS3	6	WS3	5015	5590	5590	2975	110
	HUS412	HUS412	14	3-5/8	10-7/8	2	1	10	16d	10	16d	2580	2965	3225	3060	6, F18, F15, D2, R13
	HDQ412IF	HUCQ412-SDS	14	3-9/16	11	3	1-1/2	14	WS3	6	WS3	5590	5590	5590	2975	110
HD412	HU412	14	3-9/16	10-13/16	2-1/2	1-1/8	22	16d	10	10d	3100	3565	3880	1905	5, F30, R5	
4 x 14	JUS414	LUS414	18	3-5/8	12-7/8	2	1	12	16d	6	16d	2345	2700	2935	1980	6, F15, R13
	SUH414	U414	16	3-9/16	10-1/16	2	1-1/8	16	10d	6	10d	1855	2135	2320	1115	2, F20, R12
			16	3-9/16	10-1/16	2	1-1/8	16	16d	6	10d	2210	2540	2760	1115	
	HD410	HU410	14	3-9/16	8-13/16	2-1/2	1-1/8	18	16d	10	10d	2540	2920	3175	1905	5, F30, R5
	HDQ410IF	HUCQ410-SDS	14	3-9/16	9	3	1-1/2	12	WS3	6	WS3	5015	5590	5590	2975	110
	HUS412	HUS412	14	3-5/8	10-7/8	2	1	10	16d	10	16d	2580	2965	3225	3060	6, F18, F15, D2, R13
	HDQ412IF	HUCQ412-SDS	14	3-9/16	11	3	1-1/2	14	WS3	6	WS3	5590	5590	5590	2975	110
	HD412	HU412	14	3-9/16	10-13/16	2-1/2	1-1/8	22	16d	10	10d	3100	3565	3880	1905	5, F30, R5
	HD414	HU414	14	3-9/16	12-13/16	2-1/2	1-1/8	24	16d	10	10d	3385	3890	4230	1905	5, F30, R5
4 x 16	JUS414	LUS414	18	3-5/8	12-7/8	2	1	12	16d	6	16d	2345	2700	2935	1980	6, F15, R13
	SUH414	U414	16	3-9/16	10-1/16	2	1-1/8	16	10d	6	10d	1855	2135	2320	1115	2, F20, R12
			16	3-9/16	10-1/16	2	1-1/8	16	16d	6	10d	2210	2540	2760	1115	
	HD412	HU412	14	3-9/16	10-13/16	2-1/2	1-1/8	22	16d	10	10d	3100	3565	3880	1905	5, F30, R5
	HDQ412IF	HUCQ412-SDS	14	3-9/16	11	3	1-1/2	14	WS3	6	WS3	5590	5590	5590	2975	110
	HD414	HU414	14	3-9/16	12-13/16	2-1/2	1-1/8	24	16d	10	10d	3385	3890	4230	1905	
	HD416	HU416	14	3-9/16	14-13/16	2-1/2	1-1/8	26	16d	12	10d	3665	4215	4570	2285	5, F30, R5
HD414	HU414	14	3-9/16	12-13/16	2-1/2	1-1/8	24	16d	10	10d	3385	3890	4230	1905		
4 x 18	HD416	HU416	14	3-9/16	14-13/16	2-1/2	1-1/8	26	16d	12	10d	3665	4215	4570	2285	
	HD418	--	14	3-9/16	16-1/2	2-1/2	1-1/4	28	16d	8	10d	3950	4540	4570	1425	

1) Uplift loads have been increased 60% for wind or seismic loads; no further increase shall be permitted.  
2) 10d x 1-1/2" nails are 9 gauge (0.148" diameter) by 1-1/2" long.  
3) Minimum nail embedment shall be 1-1/2" for 10d nails and 1-5/8" for 16d nails.  
4) 16d sinkers (9 gauge x 3-1/4" long) may be used at 0.84 of the table load where 16d commons are specified.  
5) WS15 Wood Screws are 1-1/4" x 1-1/2" long and are included with HDQ hangers.  
6) WS3 Wood Screws are 1-1/4" x 3" long and are included with HDQ hangers.

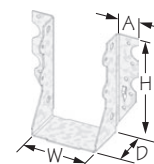
# FACE MOUNT HANGER CHARTS CONTINUED



© Copyright 2011 USP Structural Connectors®

Joist Size	USP Stock No.	Ref. No.	Steel Gauge	Dimensions				Fastener Schedule <sup>2,3,4</sup>				Allowable Loads (Lbs.)				Code Ref.
				W	H	D	A	Header		Joist		DF-L / SP				
								Qty	Nail	Qty	Nail	Floor	Roof		Uplift <sup>1</sup>	
100%	115%	125%	160%													
6 x 6	SUH66	U66	16	5-1/2	5	2	1	8	10d	4	10d	930	1065	1160	740	2, F20, R12
	HD66	HU66	14	5-1/2	3-15/16	2-1/2	1-1/8	12	16d	6	10d	1690	1945	2095	1140	5, F30, R5
6 x 8	SUH66	U66	16	5-1/2	5	2	1	8	10d	4	10d	930	1065	1160	740	2, F20, R12
	HD66	HU66	14	5-1/2	3-15/16	2-1/2	1-1/8	12	16d	6	10d	1690	1945	2095	1140	5, F30, R5
6 x 10	SUH610	U610	16	5-1/2	9	2	1	14	10d	6	10d	1625	1870	2030	1115	2, F20, R12
	HD68	HU68	14	5-1/2	7-13/16	2-1/2	1-1/8	14	16d	6	10d	1930	2220	2415	1115	5, F30, R5
6 x 12	SUH610	U610	16	5-1/2	9	2	1	14	10d	6	10d	1625	1870	2030	1115	2, F20, R12
	HD610	HU610	14	5-1/2	7-13/16	2-1/2	1-1/8	18	16d	10	10d	2540	2920	3175	1905	5, F30, R5
6 x 14	SUH610	U610	16	5-1/2	9	2	1	14	10d	6	10d	1625	1870	2030	1115	2, F20, R12
	HD610	HU610	14	5-1/2	7-13/16	2-1/2	1-1/8	18	16d	10	10d	2540	2920	3175	1905	5, F30, R5
6 x 16	SUH610	U610	16	5-1/2	9	2	1	14	10d	6	10d	1625	1870	2030	1115	2, F20, R12
	HD610	HU610	14	5-1/2	7-13/16	2-1/2	1-1/8	18	16d	10	10d	2540	2920	3175	1905	5, F30, R5
6 x 18	SUH610	U610	16	5-1/2	9	2	1	14	10d	6	10d	1625	1870	2030	1115	2, F20, R12
	HD610	HU610	14	5-1/2	7-13/16	2-1/2	1-1/8	18	16d	10	10d	2540	2920	3175	1905	5, F30, R5
8 x 6	SUH610	U610	16	5-1/2	9	2	1	14	10d	6	10d	1625	1870	2030	1115	2, F20, R12
	HD610	HU610	14	5-1/2	7-13/16	2-1/2	1-1/8	18	16d	10	10d	2540	2920	3175	1905	5, F30, R5
8 x 8	SUH610	U610	16	5-1/2	9	2	1	14	10d	6	10d	1625	1870	2030	1115	2, F20, R12
	HD610	HU610	14	5-1/2	7-13/16	2-1/2	1-1/8	18	16d	10	10d	2540	2920	3175	1905	5, F30, R5
8 x 10	SUH610	U610	16	5-1/2	9	2	1	14	10d	6	10d	1625	1870	2030	1115	2, F20, R12
	HD610	HU610	14	5-1/2	7-13/16	2-1/2	1-1/8	18	16d	10	10d	2540	2920	3175	1905	5, F30, R5
8 x 12	SUH610	U610	16	5-1/2	9	2	1	14	10d	6	10d	1625	1870	2030	1115	2, F20, R12
	HD610	HU610	14	5-1/2	7-13/16	2-1/2	1-1/8	18	16d	10	10d	2540	2920	3175	1905	5, F30, R5
8 x 14	SUH610	U610	16	5-1/2	9	2	1	14	10d	6	10d	1625	1870	2030	1115	2, F20, R12
	HD610	HU610	14	5-1/2	7-13/16	2-1/2	1-1/8	18	16d	10	10d	2540	2920	3175	1905	5, F30, R5
8 x 16	SUH610	U610	16	5-1/2	9	2	1	14	10d	6	10d	1625	1870	2030	1115	2, F20, R12
	HD610	HU610	14	5-1/2	7-13/16	2-1/2	1-1/8	18	16d	10	10d	2540	2920	3175	1905	5, F30, R5
<b>Rough Lumber Sizes</b>																
2 x 4	SUH24R	LU24R-18, U24R	16	2	3-1/16	2	1-1/8	4	10d	2	10d x 1-1/2	465	535	580	360	2, F20, R12
	HD24R	HU24R-18, U24R	14	2	3-1/16	2	1-1/8	4	16d	2	10d x 1-1/2	550	635	690	360	5, F30, R5
2 x 6 - 8	SUH26R	LU26R-18, U26R	16	2	4-15/16	2	1-3/16	6	10d	4	10d x 1-1/2	695	800	870	725	2, F20, R12
	HD26R	HU26R-18, U26R	14	2	4-15/16	2	1-3/16	6	16d	4	10d x 1-1/2	830	950	1035	725	5, F30, R5
2 x 8 - 10	SUH28R	LU28R-18	16	2	6-7/16	2	1-1/8	8	10d	6	10d x 1-1/2	930	1065	1160	800	130
	HD28R	HU28R-18	14	2	6-7/16	2	1-1/8	8	16d	6	10d x 1-1/2	1105	1270	1380	800	5, F30, R5
2 x 10 - 12 - 14	SUH210R	LU210R-18, U210R	16	2	7-13/16	2	1-1/8	10	10d	6	10d x 1-1/2	1160	1335	1450	1085	2, F20, R12
	HD210R	HU210R-18, U210R	14	2	7-13/16	2	1-1/8	10	16d	6	10d x 1-1/2	1380	1585	1725	1085	5, F30, R5
2 x 14 - 16	SUH214R	---	16	2	9-13/16	2	1-1/8	12	10d	6	10d x 1-1/2	1390	1600	1740	1085	2, F20, R12
	HD214R	---	14	2	9-13/16	2	1-1/8	12	16d	6	10d x 1-1/2	1655	1905	2070	1085	5, F30, R5
4 x 6	SUH44R	U44R	16	4	2-11/16	2	1-1/8	6	10d	2	16d	695	800	870	440	2, F20, R12
	HD44R	HU44R	14	4	2-11/16	2	1-1/8	6	16d	2	16d	830	950	1035	440	5, F30, R5
4 x 8	SUH46R	U46R	16	4	4-11/16	2	1-1/8	8	10d	4	16d	930	1065	1160	885	2, F20, R12
	HD46R	HU46R	14	4	4-11/16	2	1-1/8	8	16d	4	16d	1105	1270	1380	885	5, F30, R5
4 x 10	SUH410R	U410R	16	4	8-3/16	2	2	14	10d	6	16d	1625	1870	2030	1325	2, F20, R12
	HD410R	HU410R	14	4	8-3/16	2	2	14	16d	6	16d	1930	2220	2415	1325	5, F30, R5
6 x 8	SUH66R	U66R	16	6	5	2	1	8	10d	4	16d	930	1065	1160	885	2, F20, R12
	HD66R	HU66R	14	6	5	2	1	8	16d	4	16d	1105	1270	1380	885	5, F30, R5
6 x 10	SUH610R	U610R	16	6	9	2	1	14	10d	6	16d	1625	1870	2030	1325	2, F20, R12
	HD610R	HU610R	14	6	9	2	1	14	16d	6	16d	1930	2220	2415	1325	5, F30, R5
<b>Glulam Sizes</b>																
3-1/8 x 10-1/2 - 19-1/2	HD32105	HU3.25/10.5	14	3-1/4	9-15/16	2-1/2	1-1/8	22	16d	10	10d	3100	3565	3880	1905	5, F30, R5
3-1/8 x 12 - 21	HD3212	HU3.25/12	14	3-1/4	11-7/8	2-1/2	1-1/8	24	16d	10	10d	3385	3890	4230	1905	5, F30, R5
5-1/8 x 10-1/2 - 19-1/2	HD5112	HU5.125/12	14	5-1/4	9-15/16	2-1/2	1-1/8	22	16d	10	10d	3100	3565	3880	1905	5, F30, R5
5-1/8 x 14-1/2 - 21	HD51135	HU5.125/13.5	14	5-1/4	12-15/16	2-1/2	1-1/8	26	16d	12	10d	3665	4215	4570	2285	5, F30, R5

- Uplift loads have been increased 60% for wind or seismic loads; no further increase shall be permitted.
- 10d x 1-1/2 nails are 9 gauge (0.148" diameter) by 1-1/2" long.
- Minimum nail embedment shall be 1-1/2" for 10d nails and 1-5/8" for 16d nails.
- 16d sinkers (9 gauge x 3-1/4" long) may be used at 0.84 of the table load where 16d commons are specified.
- WS15 Wood Screws are 1-1/4" x 1-1/2" long and are included with HDQ hangers.
- WS3 Wood Screws are 1-1/4" x 3" long and are included with HDQ hangers.



Hangers